



1996 First Security Bank Western Athletic Conference Men's Basketball Tournament First Round Game 2

Final

OFFICIAL NCAA BASKETBALL BOX SCORE

VISITOR (Indicate starters by position)

Date: March 6, 1996

Time: 7:30 PM MST

Arena: The Pit/Bob King Court

Site: Albuquerque, NM

| | #9 TEXAS-EL PASO 13-15 | Total FG | | 3-Point | | FT | FTA | Rebounds | | | F | TP | |
|----|---------------------------|----------|-----|---------|-----|----|-----|----------|-----|-----|---|----|----|
| | | FG | FGA | FG | FGA | | | Off | Def | Tot | | | |
| 5 | FAJARDO, Sharif | F | 1 | 4 | | | 0 | 0 | 1 | 4 | 5 | 4 | 2 |
| 10 | SPILLAR, Jeff | G | 2 | 6 | 1 | 5 | 4 | 4 | 0 | 1 | 1 | 3 | 9 |
| 13 | JONES-YOUNG, Kimani | G | 5 | 13 | 1 | 5 | 7 | 8 | 1 | 4 | 5 | 4 | 18 |
| 20 | INGLES, Mark | G | 12 | 19 | 6 | 11 | 2 | 3 | 1 | 2 | 3 | 4 | 32 |
| 24 | BEAL, Kevin | | 2 | 3 | | | 2 | 5 | 5 | 1 | 6 | 1 | 6 |
| 33 | BOMBA, Jonathan | | 1 | 5 | | | 0 | 0 | 1 | 4 | 5 | 3 | 2 |
| 43 | PRIMOZICH, Jeremy | | 0 | 1 | | | 0 | 0 | 0 | 0 | 0 | 2 | 0 |
| 50 | GARCIA, JoJo | C | 3 | 4 | | | 2 | 2 | 1 | 4 | 5 | 4 | 8 |

| A | T | B | S | MIN |
|---|---|---|---|-----|
| 1 | 1 | 0 | 0 | 16 |
| 7 | 1 | 0 | 2 | 37 |
| 0 | 2 | 0 | 2 | 31 |
| 1 | 0 | 0 | 0 | 33 |
| 2 | 4 | 0 | 2 | 29 |
| 1 | 1 | 0 | 3 | 25 |
| 0 | 0 | 0 | 1 | 8 |
| 1 | 1 | 0 | 0 | 26 |

TEAM REBOUNDS (Included in Totals)

| | | | | | | | | | | | |
|--------|----|----|---|----|----|----|----|----|----|----|----|
| TOTALS | 26 | 55 | 8 | 21 | 17 | 22 | 12 | 21 | 33 | 25 | 77 |
|--------|----|----|---|----|----|----|----|----|----|----|----|

| | 1st Half | 2nd Half | Game |
|-----------|-------------|-------------|-------|
| TOTAL FG% | 15-31=48.4% | 11-24=45.8% | 47.3% |
| 3-Pt.% | 5-12=41.7% | 3-9=33.3% | 38.1% |
| FT% | 1-2=50.0% | 16-20=80.0% | 77.3% |

| DEADBALL REBOUNDS | | |
|-------------------|-----|-----|
| Off | Def | Tot |
| 3 | 0 | 3 |

HOME (Indicate starters by position)

| | #8 HAWAI'I 11-17 | Total FG | | 3-Point | | FT | FTA | Rebounds | | | F | TP | |
|----|---------------------|----------|-----|---------|-----|----|-----|----------|-----|-----|---|----|----|
| | | FG | FGA | FG | FGA | | | Off | Def | Tot | | | |
| 3 | WHITLOCK, Tes | G | 0 | 8 | 0 | 7 | 6 | 6 | 0 | 3 | 3 | 4 | 6 |
| 4 | SMITH, Sam | | | | | | | | | | | | |
| 12 | HARRISON, Dennis | | | | | | | | | | | | |
| 13 | KROEGER, Micah | | 1 | 1 | | 3 | 5 | 3 | 1 | 4 | 3 | 5 | |
| 20 | SMITH, Alike | G | 4 | 8 | 1 | 2 | 5 | 5 | 0 | 3 | 3 | 3 | 14 |
| 21 | WALKER, Alex | | | | | | | | | | | | |
| 22 | ZIVANOVIC, Ales | | 0 | 0 | | 0 | 0 | 0 | 0 | 0 | 0 | 0 | 0 |
| 25 | MILLER, Greg | | 0 | 0 | | 0 | 0 | 0 | 0 | 0 | 0 | 0 | 0 |
| 31 | HARRIS, Anthony | G | 5 | 11 | 0 | 2 | 3 | 5 | 1 | 0 | 1 | 4 | 13 |
| 33 | FURLONG, Danny | | | | | | | | | | | | |
| 41 | SUEING, Justice | F | 4 | 12 | | 6 | 9 | 2 | 3 | 5 | 3 | 14 | |
| 50 | SUNDBERG, Seth | C | 6 | 7 | | 5 | 8 | 6 | 5 | 11 | 2 | 17 | |

| A | T | B | S | MIN |
|---|---|---|---|-----|
| 1 | 2 | 0 | 2 | 36 |
| 0 | 1 | 0 | 1 | 21 |
| 3 | 2 | 0 | 3 | 38 |
| 0 | 0 | 0 | 0 | 0+ |
| 0 | 0 | 0 | 0 | 0+ |
| 3 | 3 | 0 | 0 | 34 |
| 2 | 2 | 0 | 0 | 40- |
| 1 | 1 | 1 | 1 | 31 |

TEAM REBOUNDS (Included in Totals)

| | | | | | | | | | | | |
|--------|----|----|---|----|----|----|----|----|----|----|----|
| TOTALS | 20 | 47 | 1 | 11 | 28 | 38 | 13 | 19 | 32 | 19 | 69 |
|--------|----|----|---|----|----|----|----|----|----|----|----|

| | 1st Half | 2nd Half | Game |
|-----------|-------------|-------------|-------|
| TOTAL FG% | 6-17=35.3% | 14-30=46.7% | 42.6% |
| 3-Pt.% | 0-4=0.0% | 1-7=14.3% | 9.1% |
| FT% | 12-16=75.0% | 16-22=72.7% | 73.7% |

| DEADBALL REBOUNDS | | |
|-------------------|-----|-----|
| Off | Def | Tot |
| 3 | 0 | 3 |

ATTENDANCE:

TECHNICAL FOULS: NONE

OFFICIALS: GRACEY, HALL, Dixon

COMMENTS:

Texas-El Paso
Hawaii'i

| 1st | 2nd | OT1 | OT2 | Final |
|-----|-----|-----|-----|-------|
| 36 | 41 | | | 77 |
| 24 | 45 | | | 69 |

FIRST HALF

| <u>TIME</u> | <u>ACTION</u> | <u>UH</u> | <u>+/-</u> | <u>UTEP</u> |
|-------------|---|-----------|------------|-------------|
| | UH--Smith (G), Whitlock (G), Harris (G), Sueing (F), Sundberg (C) COACH--Riley Wallace | | | |
| | UTEP--Spillar (G), Jones-Young (G), Ingles (G), Fajardo (F), Garcia (C) COACH--G. Ray Johnson for Don Haskin | | | |
| | OFFICIALS--David Hall (R) Lonnie Dixon/Bill Gracey (U) | | | |
| 7:40p | | | | |
| 19:59 | Sundberg/Fajardo jump center--UTEP controls/Spillar going North | | | |
| 19:22 | Garcia, hook paint close | | -2 | 2 |
| 18:34 | Ingles, layin assist Spillar off steal Whitlock and break | | -4 | 4 |
| 18:14 | Whitlock(Ingles-1) 1st T (Hall) under basket 2 Q Q | 2 | -2 | |
| 17:34 | Jones-Young, steal Sundberg coast to coast layin | | -4 | 6 |
| 16:30 | Sundberg(Garcia-1) 2nd T (Hall) low paint off. reb. 2 Q Q | 4 | -2 | |
| 16:12 | Engles, perimeter 3 assist Farjardo paint | | -5 | 9 |
| 15:52 | Whitlock(Fajardo-1) 3rd T (Garcey) paint 2 Q Q | 6 | -3 | |
| " | Media Timeout | | | |
| " | UH 0/2 00.0% | | | |
| " | UTEP 4/8 50.0% | | | |
| " | Bomba/Primozich for Garcia/Fajardo | | | |
| 15:23 | Sueing, drive base-line reverse layin | 8 | -1 | |
| 14:36 | Harris, double pump layin | 10 | +1 | |
| 14:29 | Ingles(Harris-1) 1st T (Garcey) perimeter | | | |
| 14:24 | Ingles, perimeter 3 | | -2 | 12 |
| 14:05 | Whitlock(Primovich-1) 4th T (Hall) perimeter | | | |
| 13:37 | Ingles, perimeter 3 assist Spillar perimeter | | -5 | 15 |
| 13:16 | A. Smith, base-line J 10ft | 12 | -3 | |
| 12:37 | Harris, drive paint layin | 14 | -1 | |
| 12:23 | Primozich(Sueing-1) 2nd T (Hall) perimeter | | | |
| " | Fajardo/Garcia/Beal for Jones-Young/Bomba/Primozich | | | |
| " | Furlong for Sundberg | | | |
| 12:04 | Ingles, J paint 12ft | | -3 | 17 |
| 11:24 | Beal, scoop layin | | -5 | 19 |
| 10:25 | Sueing(Fajardo-2) 5th T (Hall) under basket 2 Q Q | 16 | -3 | |
| " | Bomba for Fajardo | | | |
| " | Media Timeout | | | |
| " | UH 4/10 40.0% | | | |
| " | UTEP 8/17 47.1% | | | |

MAR. 6, 1996
 MEN'S WAC TOURNEY
 UH vs UTEP

FIRST HALF CONT'D.

| <u>TIME</u> | <u>ACTION</u> | <u>UH</u> | <u>+/-</u> | <u>UTEP</u> |
|-------------|---|-----------|------------|-------------|
| | | 16 | -3 | 19 |
| 10:09 | Ingles, J top key NBA 3 Spillar assist perimeter | | -6 | 22 |
| 9:01 | Garcia, looses pass out of bounds North base-line (Garcey) | | | |
| 8:28 | Ingles to Beal pass out of bounds NE corner | | | |
| " | Jones-Young for Spillar | | | |
| 7:52 | Media Timeout | | | |
| " | UH 4/11 36.4% | | | |
| " | UTEP 9/20 45.0% | | | |
| 7:04 | Bomba, reb. reverse layin | | -8 | 24 |
| 6:46 | Jones-Young, layin off break | | -10 | 26 |
| 6:23 | Sueing(Garcia-2) 6th T (Gracey) paint | | | |
| " | Kroeger for Harris | | | |
| 6:01 | Beal(Whitlock-1) 3rd T (Hall) lane | | | |
| 5:46 | A. Smith, break layin def. goaltending Beal (Hall/Gracey) | 18 | -8 | |
| 5:17 | Jones-Young, J perimeter 3 | | -11 | 29 |
| 4:52 | Beal, break layin assist Ingles paint | | -13 | 31 |
| 4:48 | UH Timeout-20 sec. (Sueing) | | | |
| " | Sillar for Ingles | | | |
| 4:04 | Garcia, layin assist Spillar perimeter | | -15 | 33 |
| 3:41 | Sueing(Bomba-1) 7th T (Hall) paint 1-1 0 Kroeger | 19 | -14 | |
| " | Sundberg for Furlong | | | |
| 3:31 | Kroeger(Jones-Young-1) 2nd T (Dixon) 2 0 Jones-Young | 20 | -13 | |
| 3:07 | Jones-Young(Kroeger-1) 4th T (Hall) off. reb. 2 0 | | -14 | 34 |
| " | Media Timeout | | | |
| " | UH 5/15 33.3% | | | |
| " | UTEP 14/28 50.0% | | | |
| " | Primozych for Bomba | | | |
| 2:12 | Ingles for Primozych | | | |
| 1:48 | Whitlock(Ingles-2) 9th T (Hall) tripping top key 1-1 0 0 | 22 | -12 | |
| " | Harris for Kroeger | | | |
| 1:16 | Ingles, drive paint reverse layin | | -14 | 36 |
| 0:55.9 | Sundberg(Spillar-1) 10th T (Gracey) under basket 2 0 0 Garcia | | | |
| 0:54.9 | Garcia(Whitlock-2) 5th T (Hall) def. reb. | | | |
| " | Kroeger for Whitlock | | | |
| 0:11.6 | Sundberg, turnaround J close paint | 24 | -12 | |
| | | 24 | -12 | 36 |

8:25p

Lead changes: 2
 Points in paint: UH-10 UTEP-20
 Paint conversion %: UH-5/9 55.6% UTEP-10/13 76.9%
 Points off turnovers: UH-4 UTEP-10
 Turnover conversion %: UH-2/6 33.3% UTEP-5/7 71.4%

OFFICIAL NCAA BASKETBALL BOX SCORE - FIRST HALF

Texas-El Paso

Date: March 6, 1996

| UTEP (VISITORS) | | Total | | 3-Pts | | FT | | Rebounds | | | PF | | TP | | A | TO | BK | ST | MN |
|-----------------|---------------------|-------|----|-------|----|----|----|----------|----|----|----|----|----|---|---|----|-----|----|----|
| | | FG | AT | FG | AT | FT | AT | OF | DF | To | | | | | | | | | |
| 5 | FAJARDO, Sharif | 0 | 1 | 0 | 0 | 0 | 0 | 1 | 0 | 1 | 2 | 0 | 1 | 0 | 0 | 0 | 0 | 6 | |
| 10 | SPILLAR, Jeff | 0 | 3 | 0 | 3 | 0 | 0 | 0 | 0 | 0 | 1 | 0 | 5 | 1 | 0 | 1 | 17 | | |
| 13 | JONES-YOUNG, Kimani | 3 | 7 | 1 | 2 | 1 | 2 | 1 | 3 | 4 | 1 | 8 | 0 | 2 | 0 | 2 | 16 | | |
| 20 | INGLES, Mark | 7 | 11 | 4 | 7 | 0 | 0 | 0 | 1 | 1 | 2 | 18 | 1 | 0 | 0 | 0 | 17 | | |
| 24 | BEAL, Kevin | 2 | 2 | 0 | 0 | 0 | 0 | 2 | 0 | 2 | 0 | 4 | 1 | 2 | 0 | 1 | 12 | | |
| 33 | BOMBA, Jonathan | 1 | 4 | 0 | 0 | 0 | 0 | 1 | 3 | 4 | 1 | 2 | 1 | 0 | 0 | 1 | 11 | | |
| 43 | PRIMOZICH, Jeremy | 0 | 0 | 0 | 0 | 0 | 0 | 0 | 0 | 0 | 1 | 0 | 0 | 0 | 0 | 1 | 5 | | |
| 50 | GARCIA, JoJo | 2 | 3 | 0 | 0 | 0 | 0 | 0 | 3 | 3 | 2 | 4 | 0 | 1 | 0 | 0 | 16 | | |
| Team Totals | | | | | | | | 1 | 1 | 2 | | | 0 | | | | | | |
| TOTALS | | 15 | 31 | 5 | 12 | 1 | 2 | 6 | 11 | 17 | 10 | 36 | 9 | 6 | 0 | 6 | 100 | | |

Deadball Rebounds: 1, 0: 1

Tot FG %: 1st Half: 15-31 .484
 3-Pt FG %: 1st Half: 5-12 .417
 FT % : 1st Half: 1- 2 .500

Hawai'i

| UH (HOME) | | Total | | 3-Pts | | FT | | Rebounds | | | PF | | TP | | A | TO | BK | ST | MN |
|-------------|------------------|-------|----|-------|----|----|----|----------|----|----|----|----|----|---|---|----|-----|----|----|
| | | FG | AT | FG | AT | FT | AT | OF | DF | To | | | | | | | | | |
| 3 | WHITLOCK, Tes | 0 | 3 | 0 | 3 | 6 | 6 | 0 | 2 | 2 | 2 | 6 | 0 | 1 | 0 | 2 | 19 | | |
| 4 | SMITH, Sam | 0 | 0 | 0 | 0 | 0 | 0 | 0 | 0 | 0 | 0 | 0 | 0 | 0 | 0 | 0 | -- | | |
| 12 | HARRISON, Dennis | 0 | 0 | 0 | 0 | 0 | 0 | 0 | 0 | 0 | 0 | 0 | 0 | 0 | 0 | 0 | -- | | |
| 13 | KROEGER, Micah | 0 | 0 | 0 | 0 | 1 | 2 | 1 | 1 | 2 | 1 | 1 | 0 | 0 | 0 | 0 | 5 | | |
| 20 | SMITH, Alikea | 2 | 5 | 0 | 0 | 0 | 0 | 0 | 1 | 1 | 0 | 4 | 0 | 1 | 0 | 1 | 20 | | |
| 21 | WALKER, Alex | 0 | 0 | 0 | 0 | 0 | 0 | 0 | 0 | 0 | 0 | 0 | 0 | 0 | 0 | 0 | -- | | |
| 22 | ZIVANOVIC, Ales | 0 | 0 | 0 | 0 | 0 | 0 | 0 | 0 | 0 | 0 | 0 | 0 | 0 | 0 | 0 | -- | | |
| 25 | MILLER, Greg | 0 | 0 | 0 | 0 | 0 | 0 | 0 | 0 | 0 | 0 | 0 | 0 | 0 | 0 | 0 | -- | | |
| 31 | HARRIS, Anthony | 2 | 4 | 0 | 1 | 0 | 0 | 0 | 0 | 0 | 1 | 4 | 0 | 3 | 0 | 0 | 16 | | |
| 33 | FURLONG, Danny | 0 | 0 | 0 | 0 | 0 | 0 | 0 | 0 | 0 | 0 | 0 | 0 | 0 | 0 | 0 | 8 | | |
| 41 | SUEING, Justice | 1 | 3 | 0 | 0 | 3 | 4 | 0 | 3 | 3 | 1 | 5 | 1 | 1 | 0 | 0 | 20 | | |
| 50 | SUNDBERG, Seth | 1 | 2 | 0 | 0 | 2 | 4 | 2 | 1 | 3 | 0 | 4 | 0 | 1 | 1 | 0 | 12 | | |
| Team Totals | | | | | | | | 0 | 2 | 2 | | | 0 | | | | | | |
| TOTALS | | 6 | 17 | 0 | 4 | 12 | 16 | 3 | 10 | 13 | 5 | 24 | 1 | 7 | 1 | 3 | 100 | | |

Deadball Rebounds: 1, 0: 1

Tot FG %: 1st Half: 6-17 .353
 3-Pt FG %: 1st Half: 0- 4 .000
 FT % : 1st Half: 12-16 .750

OFFICIALS: Bill Gracey, David Hall, Lonnie Dixon

Technical Fouls:

Attendance: TBA

Comments: CourtSide(tm) software by CompuSTATS / San Diego, CA (619)296-7834

| | 1st | 2nd | OT | OT | Tot |
|------|-----|-----|----|----|-----|
| UTEP | 36 | | | | 36 |
| UH | 24 | | | | 24 |

MAR. 6, 1996

MEN'S WAC TOURNEY

UH vs UTEP

SECOND HALF

| <u>TIME</u> | <u>ACTION</u> | <u>UH</u> | <u>+/-</u> | <u>UTEP</u> |
|-------------|--|-----------|------------|-------------|
| | UH--same as 1st half | | | |
| | UTEP--same as 1st half | | | |
| 8:39p | | 24 | -12 | 36 |
| 19:59 | UH--possession | | | |
| 19:24 | Harris, leaner layin off break A. Smith assist perimeter | 26 | -10 | |
| 19:14 | Double foul (Dixon) ½ court | | | |
| " | A. Smith-1 1st T | | | |
| " | Ingles-3 1st T | | | |
| 18:47 | Ingles(Sueing-2) 2nd T (Hall) low paint 2 0 UTEP team reb. | | -11 | 37 |
| 18:28 | Jones-Young, J paint 7ft | | -13 | 39 |
| 18:12 | Harris(Jones-Young-2) 2nd T (Hall) paint 2 0 0 | 28 | -11 | |
| 17:22 | Harris, reb. layin | 30 | -9 | |
| " | Harris(Spillar-2) 3rd T (Gracey) 0 Garcia | | | |
| " | Bomba for Fajardo | | | |
| 15:55 | A. Smith, stop and pop window | 32 | -7 | |
| 15:33 | Ingles, leaner lclose paint | | -9 | 41 |
| 15:14 | Sueing(Jones-Young-3) 4th T (Dixon) off. reb. | | | |
| " | Media Timeout | | | |
| " | UH 3/7 42.9% | | | |
| " | UTEP 2/5 40.0% | | | |
| " | Beal for Jones-Young | | | |
| 15:07 | Spillar, steal Sueing coast to coast layin | | -11 | 43 |
| 14:45 | Sueing, layin high off glass | 34 | -9 | |
| " | Sueing(Garcia-3) 5th T (Hall) 0 | 35 | -8 | |
| " | Primozych for Garcia | | | |
| 14:18 | Ingles(Harris-2) 3rd T (Hall) top key | | | |
| 14:05 | Beal(Harris-3) 4th T (Gracey) low paint 2 0 0 | | -9 | 44 |
| 13:54 | Sundberg, layin | 37 | -7 | |
| 13:40 | Ingles(Whitlock-3) 5th T (Gracey) ½ court | | | |
| 13:01 | Harris(Bomba-2) 6th T (Dixon) paint 2 0 0 | 38 | -6 | |
| 12:42 | A. Smith(Primozych-2) 7th T (Gracey) paint 2 0 0 | 40 | -4 | |
| 12:14 | Beal(Harris-4) 6th T (Hall) off. reb. 2 0 0 | | -5 | 45 |
| " | Jones-Young for Primozych | | | |
| " | Kroeger for Harris | | | |
| 11:54 | Ingles, perimeter 3 | | -8 | 48 |
| 11:37 | Sundberg(Jones-Young-4) 8th T (Dixon) low paint 2 0 0 | 42 | -6 | |
| " | Fajardo for Jones-Young | | | |
| " | Media Timeout | | | |
| " | UH 5/10 50.0% | | | |
| " | UTEP 4/10 40.0% | | | |

MAR. 6, 1996
 MEN'S WAC TOURNEY
 UH vs UTEP

SECOND HALF CONT'D.

| <u>TIME</u> | <u>ACTION</u> | <u>UH</u> | <u>+/-</u> | <u>UTEP</u> |
|-------------|---|-----------|------------|-------------|
| | | 42 | -6 | 48 |
| 11:13 | Ingles, rebound putback own miss | | -8 | 50 |
| " | Ingles(Sundberg-1) 7th T (Gracey) @ | | -9 | 51 |
| 11:01 | Sueing(Fajardo-3) 9th T (Hall) paint 2 @ 0 Beal | 43 | -8 | |
| 10:01 | Kroeger(Engles-4) 10th T (Dixon) off. chg. paint | | | |
| " | Jones-Young for Engles | | | |
| " | Harris for Whitlock | | | |
| 9:39 | UTEP Timeout-20sec. (Bench) | | | |
| " | UH 5/12 41.7% | | | |
| " | UTEP 5/14 35.7% | | | |
| 9:05 | Sundberg(Fajardo-4) 11th T (Dixon) off. reb. 2 @ 0 Sundberg | 44 | -7 | |
| " | Garcia for Fajardo | | | |
| 8:44 | Harris, J base-line 14ft | 46 | -5 | |
| 8:14 | Spillar, peirmeter 3 NBA | | -8 | 54 |
| 7:54 | Sundberg, hook paint 9ft | 48 | -6 | |
| 7:34 | Garcia, J window | | -8 | 56 |
| 7:15 | Kroeger(Bomba-3) 12th T (Hall) under basket 2 @ @ | 50 | -6 | |
| " | Whitlock for A. Smith | | | |
| " | Media Timeout | | | |
| " | UH 7/15 46.7% | | | |
| " | UTEP 7/17 41.2% | | | |
| 6:59 | Beal(Kroeger-2) 8th T (Hall) perimeter 1-1 0 Whitlock | | | |
| 6:42 | Sundberg, layin assist paint Harris | 52 | -4 | |
| 6:11 | Jones-Young, J perimeter 12ft | | -6 | 58 |
| 5:43 | Ingles for Beal | | | |
| 5:43 | Kroeger, layin off inbound pass North end Harris | 54 | -4 | |
| " | Kroeger(Garcia-4) 13th T (Dixon) 0 UTEP team reb. 2 @ @ | | | |
| 5:05 | Garcia(Sundberg-2) 9th T (Gracey) 0:00.1 on shot clock | | -6 | 60 |
| 4:52 | A. Smith for Kroeger | | | |
| 4:47 | Sundberg, J close paint | 56 | -4 | |
| 4:20 | Fajardo for Garcia | | | |
| 4:10 | A. Smith, perimeter 3 | 59 | -1 | |
| 3:10 | Spilar Whitlock-4) 10th T (Hall) perimeter 2 @ @ | | -3 | 62 |
| " | Beal for Bomba | | | |
| " | Media Timeout | | | |
| " | UH 11/22 50.0% | | | |
| " | UTEP 8/20 40.0% | | | |

MAR. 6, 1996
 MEN'S WAC TOURNEY
 UH vs UTEP

SECOND HALF CONT'D.

| <u>TIME</u> | <u>ACTION</u> | <u>UH</u> | <u>+/-</u> | <u>UTEP</u> |
|-------------|--|-----------|------------|-------------|
| | | 59 | -3 | 62 |
| 3:00 | Sueing, layin | 61 | -1 | |
| 2:13 | UTEPA Timeout-1 (Beal) | | | |
| " | UH 12/24 50.0% | | | |
| " | UTEPA 8/21 38.1% | | | |
| 1:58 | Ingles, J perimeter 3 | | -4 | 65 |
| 1:35 | Sueing(Beal-1) 14th T (Dixon) lowpaint 2 0 0 2 0 0 | 62 | -3 | |
| 1:31 | Spillar(A. Smith-2) 11th T (Dixon) tripping 1/2 court | | -5 | 67 |
| 1:25 | Sundberg, slam assist A. Smith perimeter | 64 | -3 | |
| 1:24 | UH Timeout-20sec. (Bench) | | | |
| " | Kroeger for Sundberg | | | |
| " | Fajardo for Garcia | | | |
| 0:53.2 | Ingles, stop and pop paint 6ft | | -5 | 69 |
| 0:38.9 | A. Smith(Spillar-3) 15thT (Hall) side 3 0 0 0 | 67 | -2 | |
| 0:37.4 | Jones-Young(Sueing-3) 12th T (Hall) back court 2 0 0 | | -4 | 71 |
| 0:37.3 | UH Timeout-1 (Whitlock) | | | |
| 0:29.1 | Sueing, leaner close paint | 69 | -2 | |
| 0:23.5 | Fajardo, slam | | -4 | 73 |
| 0:12.1 | Jones-Young(A. Smith-3) 13th T (Hall) 2 0 0 | | -6 | 75 |
| " | UH Timeout-2 (a. Smith) | | | |
| 0:05.8 | Jones-Young(A. Smith-3) 14th T (Dixon) def. reb. 2 0 0 | | -8 | 77 |
| " | Zivanovic/Miller for Whitlock/Sueing | | | |
| | | 69 | -8 | 77 |

9:43p

Points in paint 2nd half: UH-20 UTEP-10
 Paint conversion %: UH-10/15 66.7% UTEP-5/10 50.0%
 Points off turnovers for game: UH-6 UTEP-14
 Turnover conversion %: UH-3/11 27.3% UTEP-7/11 63.6%

Play by play: Jim Howard/Georgette Lombardo

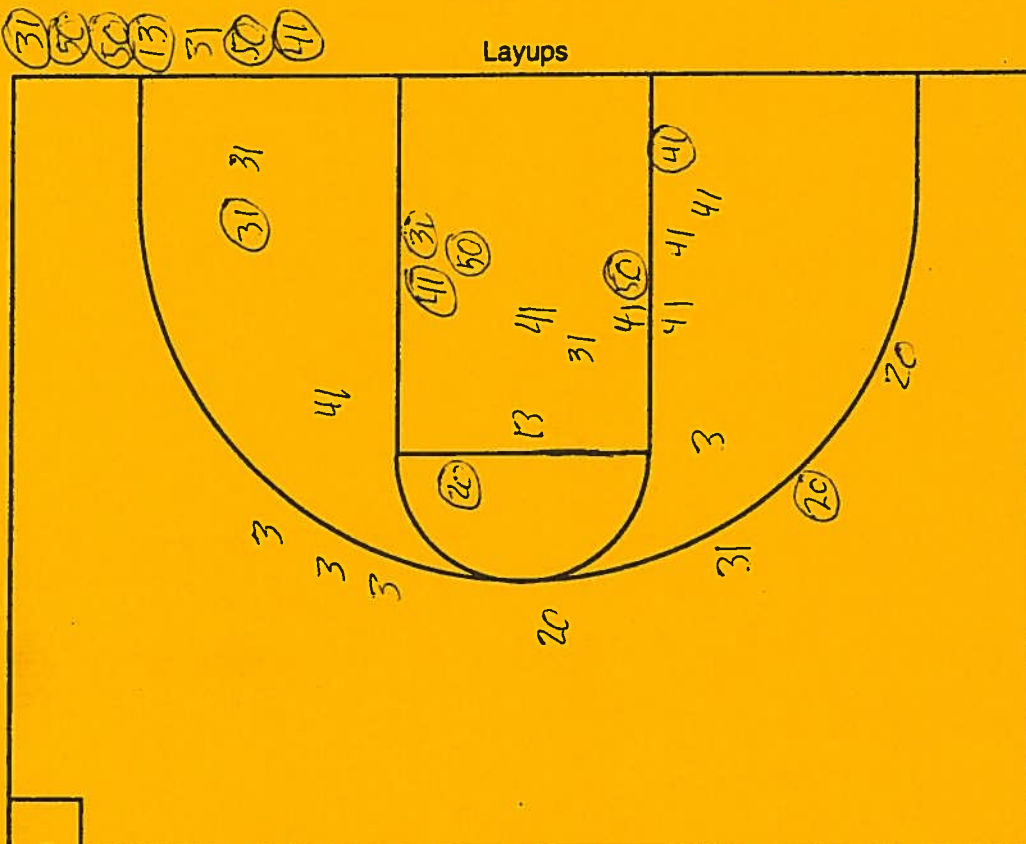
NCAA® BASKETBALL SHOT CHART

First Half

Second Half

(Circle one)

Layups



Turnovers

- 1
- 2
- 3
- 4
- 5
- 6
- 7
- 8
- 9
- 10
- 11
- 12
- 13
- 14
- 15
- 16
- 17
- 18
- 19

2 POINT

13 of 23

% 56.5

3 POINT

1 of 7

% 14.3

Attempted 30

Made 14

Percentage 46.7

2 POINT

8 of 15

% 53.3

3 POINT

3 of 9

% 33.3

Attempted 24

Made 11

Percentage 45.8

Layups

20 16 5

Team UNIV. OF HAWAII I

Team UNIV. OF TEXAS at EL PASO