

OFFICIAL BASKETBALL BOX SCORE -- G A M E T O T A L S

Brigham Young vs HAWAI'I

01-15-96 7:00 p.m. at Special Events Arena

VISITORS: Brigham Young (9-5,3-2)

No.	N A M E	TOT-FG		3-PT		FT	FTA	REBOUNDS			PF	TP	A	TO	BLK	S	MIN
		FG	FGA	FG	FGA			OF	DE	TOT							
04	CHRISTENSEN, Todd	0	1	0	0	0	0	0	0	0	0	0	1	0	0	1	
14	RUFFNER, Bryon	* 8	18	1	2	2	4	1	3	4	4	19	3	3	0	1	37
22	REID, Randy	* 3	8	0	1	0	0	0	1	1	3	6	7	1	0	3	39
24	BERGES, Grant	0	1	0	0	0	0	0	0	0	0	0	0	1	0	0	4
31	ROBERTS, Kenneth	* 11	15	1	1	5	5	2	4	6	3	28	3	6	0	2	39
33	CAMPBELL, Jeff	* 4	6	0	0	2	2	1	3	4	4	10	1	1	0	2	34
42	COOPER, Nathan	3	5	0	0	1	2	2	1	3	3	7	2	1	0	1	21
44	AHLBOM, Jarko	0	1	0	0	0	0	0	0	0	2	0	0	0	0	0	1
50	WEIDAUER, Justin	* 3	8	0	0	2	2	3	4	7	3	8	3	2	0	0	24
TEAM REBOUNDS.....								1	2	3							
TOTALS		32	63	2	4	12	15	10	18	28	22	78	19	17	0	9	200

TOTAL FG% 1st Half:	15-31	.484	2nd Half:	17-32	.531	Game:	.508	DEADBALL
3-Pt. FG% 1st Half:	2- 3	.667	2nd Half:	0- 1	.000	Game:	.500	REBOUNDS
F Throw % 1st Half:	8- 8	1.000	2nd Half:	4- 7	.571	Game:	.800	1

HOME TEAM: HAWAI'I (4-10,1-5)

No.	N A M E	TOT-FG		3-PT		FT	FTA	REBOUNDS			PF	TP	A	TO	BLK	S	MIN
		FG	FGA	FG	FGA			OF	DE	TOT							
04	SMITH, Sam	1	3	0	0	0	0	0	1	1	0	2	0	1	1	5	
13	KROEGER, Micah	* 4	9	2	2	3	4	2	3	5	5	13	4	3	0	3	35
20	SMITH, Alika	* 4	6	0	1	2	2	0	0	0	3	10	4	7	0	1	40
22	ZIVANOVIC, Ales	0	0	0	0	0	0	0	0	0	0	0	0	0	0	0	3
25	MILLER, Greg	1	1	0	0	1	4	0	1	1	1	3	0	0	0	1	6
31	HARRIS, Anthony	* 8	16	1	3	9	12	1	3	4	2	26	1	2	0	1	35
33	FURLONG, Danny	* 0	0	0	0	0	0	0	1	1	1	0	1	0	1	0	21
41	SUEING, Justice	* 7	10	0	0	5	8	3	5	8	3	19	3	2	0	3	36
50	SUNDBERG, Seth	2	4	0	0	0	0	1	4	5	3	4	0	4	1	2	19
TEAM REBOUNDS.....								0	4	4							
TOTALS		27	49	3	6	20	30	7	22	29	18	77	13	19	3	12	200

TOTAL FG% 1st Half:	16-32	.500	2nd Half:	11-17	.647	Game:	.551	DEADBALL
3-Pt. FG% 1st Half:	2- 5	.400	2nd Half:	1- 1	1.000	Game:	.500	REBOUNDS
F Throw % 1st Half:	8-10	.800	2nd Half:	12-20	.600	Game:	.667	7, 1

OFFICIALS: Tom Harrington, Paul Sternberger, Milton Stowe

TECHNICAL FOULS:

Brigham Young - none

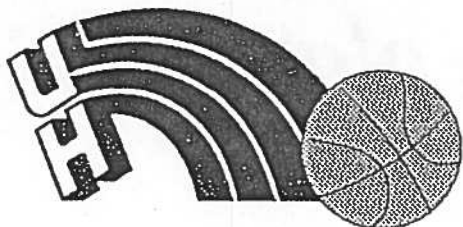
HAWAI'I - none

ATTENDANCE: 6179

SCORE BY PERIODS:	1st	2nd	OT1	OT2	OT3	OT4	TOTAL
Brigham Young	40	38					78
HAWAI'I	42	35					77

Starters:  
Ruffner, Reid, Roberts, Campbell, Weidauer

Starters:  
A. Smith, Harris, Kroeger, Furlong, Sueing



# Play-by-play

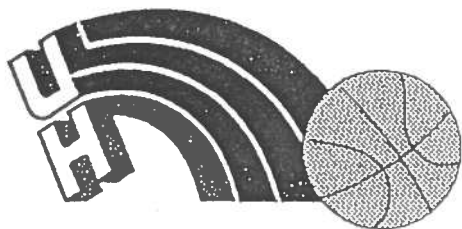
University of Hawaii Basketball  
January 15, 1996, 7:05 pm  
Special Events Arena, Honolulu Hawaii

BYU

Hawaii

Tip controlled by BYU. Campbell vs. Sueing  
19:34  
17:43  
17:40 Roberts baseline layup on inbounds,  
A: Weidauer 2  
16:56  
16:50 Reid pf 1, t 1  
Cooper for Weidauer  
16:11  
15:55 Reid 18 left, A: Roberts 4  
15:37 Ruffner layup, A: Cooper 6  
15:16 Campbell pf 1, t 2  
Official  
Hawaii  
14:54  
14:38 Roberts layup, A: Reid 8  
14:01  
13:53 Roberts ft (2) 9  
Berges for Campbell 10  
13:47  
13:27  
13:19  
12:59  
12:37 Campbell for Ruffner  
11:46 Campbell 9 right, A: Cooper 12  
11:29  
11:17 Cooper 18 right, A: Reid 14  
10:50 Reid driving layup 16  
10:15  
9:54 Christensen, Weidauer & Ruffner for  
Reid Berges & Cooper  
Roberts ft (2) 17  
Ahlbom for Roberts 18  
Official  
9:41 Ahlbom pf 1, t 3  
9:28  
9:01  
8:56 BTU  
Reid & Roberts for Christensen & Ahlbom  
8:35 Weidauer pf 1, t 4

2 Sueing stuff after rebound on break  
Kroeger pf 1, t 1  
  
Sundberg for Furlong  
- Kroeger ft (2)  
3  
5 Harris layup, A: Sueing  
  
Time Out  
20" Time Out #1  
7 Sundberg 7 right, A: Kroeger  
  
9 A. Smith layup on break after steal  
Sundberg pf 1, t 2  
  
11 Harris 9 right  
13 Sueing layup after rebound  
A. Smith pf 1, t 3  
16 Kroeger 20 left, A: Smith\*  
Sueing pf 1, t 4  
  
19 Harris 20 left, A: Kroeger\*  
  
21 Kroeger layup on break, A: Harris  
Sueing pf 2, t 5  
S. Smith for Harris  
  
Time Out  
22 Sueing ft (2)  
23  
25 S. Smith driving loc layup after steal  
27 Sueing slam on break  
20" Time Out #1



# Play-by-play

First Half Continued

BYU (18)

(27) Hawaii

8:03 Campbell pf 2, t 5  
 7:50 Campbell ft (2) 19  
 Official 20  
 7:14 Campbell 14 left base, A: Weidauer 22  
 6:58 Ruffner layup A: Reid after steal 24  
 6:34  
 5:49 Campbell layup, A: Ruffner 26  
 5:09 Roberts 20 right, A: Reid\* 29  
 4:35 Reid 19 left 31  
 4:30 Hawaii  
 4:14 Weidauer ft (1-1) 32  
 Ahlbom for Campbell 33  
 4:08  
 3:51 Ahlbom pf 2, t 6  
 cooper for Ahlbom  
 3:35  
 2:57  
 2:25 Ruffner layup after steal 35  
 2:03  
 1:52 Roberts layup, A: Reid 37  
 1:20 Ruffner 21 left, A: Reid\* 40  
 0:43 Cooper pf 1, t 7  
 0:24 Ruffner pf 1, t 8

-- Sueing ft (2)  
 28  
 Sundberg pf 2, t 6  
 Time Out  
 Zivanovic for Sueing  
 30 Kroeger layup after rebound  
 Time Out #1  
 Harris for S. Smith  
 A. Smith pf 2, t 7  
 Sueing for Zivanovic  
 32 Sueing layup, A: Kroeger  
 34 Sundberg 15 right, A: A. Smith  
 36 Sueing 13 right  
 38 Harris 15 left  
 39 Harris ft (2)  
 40 Miller for Sueing  
 41 Kroeger ft (1-1)  
 42

Half ends.

Score: Hawaii 42, BYU 40.

# NCAA® BASKETBALL SHOT CHART

First Half

Second Half

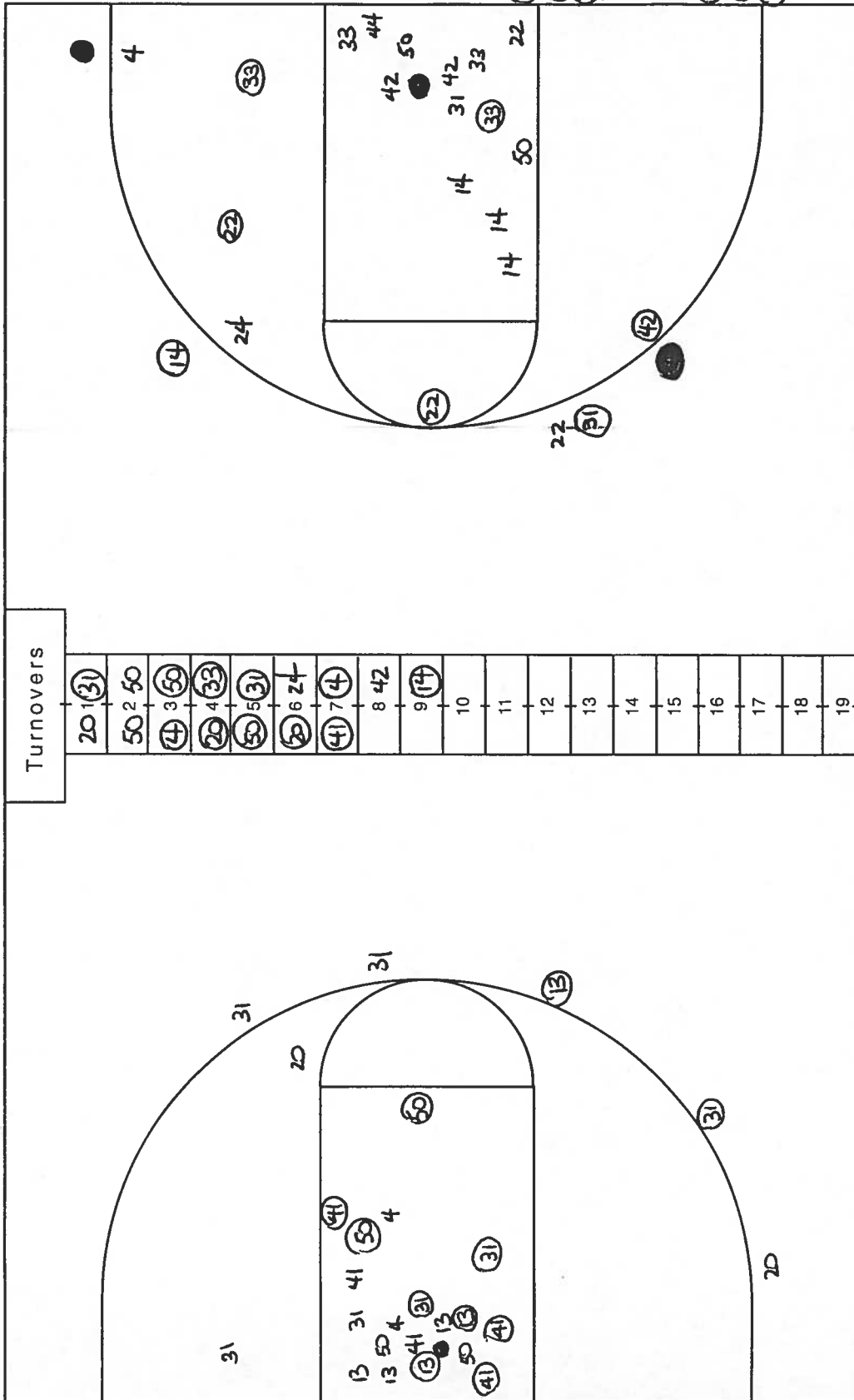
(Circle one)

BYU

Team

HAWAII

Team



Layups 31 14 31 22 22 24 24 33 14 31

Attempted 31  
 Made 15  
 Percentage .484

10 12  
 pts, off  
 T.O.

Attempted 32  
 Made 16  
 Percentage .500

Layups 13 4 20 20 4 4

OFFICIAL BASKETBALL BOX SCORE -- F I R S T H A L F

Brigham Young vs HAWAI'I

01-15-96 7:00 p.m. at Special Events Arena

VISITORS: Brigham Young

No.	N A M E	TOT-FG		3-PT		FT	FTA	REBOUNDS			PF	TP	A	TO	BLK	S	MIN
		FG	FGA	FG	FGA			OF	DE	TOT							
04	CHRISTENSEN, Todd	0	1	0	0	0	0	0	0	0	0	0	1	0	0	1	
14	RUFFNER, Bryon	* 4	8	1	1	0	0	0	0	0	1	9	1	1	0	1	
22	REID, Randy	* 3	6	0	1	0	0	0	1	1	1	6	6	0	0	1	
24	BERGES, Grant	0	1	0	0	0	0	0	0	0	0	0	0	1	0	4	
31	ROBERTS, Kenneth	* 4	5	1	1	4	4	1	3	4	0	13	1	2	0	19	
33	CAMPBELL, Jeff	* 3	4	0	0	2	2	1	1	2	2	8	0	1	0	15	
42	COOPER, Nathan	1	3	0	0	0	0	1	1	2	1	2	2	1	0	11	
44	AHLBOM, Jarko	0	1	0	0	0	0	0	0	0	2	0	0	0	0	1	
50	WEIDAUER, Justin	* 0	2	0	0	2	2	0	3	3	1	2	2	2	0	13	
TEAM REBOUNDS.....								1	2	3							
TOTALS		15	31	2	3	8	8	4	11	15	8	40	12	9	0	4	100

TOTAL FG% 1st Half:	15-31	.484	2nd Half:	0-0	.000	Game:	.484	DEADBALL
3-Pt. FG% 1st Half:	2-3	.667	2nd Half:	0-0	.000	Game:	.667	REBOUNDS
F Throw % 1st Half:	8-8	1.000	2nd Half:	0-0	.000	Game:	1.000	0

HOME TEAM: HAWAI'I

No.	N A M E	TOT-FG		3-PT		FT	FTA	REBOUNDS			PF	TP	A	TO	BLK	S	MIN
		FG	FGA	FG	FGA			OF	DE	TOT							
04	SMITH, Sam	1	3	0	0	0	0	0	1	1	0	2	0	1	1	5	
13	KROEGER, Micah	* 3	7	1	1	3	4	2	0	2	1	10	3	0	0	20	
20	SMITH, Alikea	* 1	3	0	1	0	0	0	0	0	2	2	2	3	0	20	
22	ZIVANOVIC, Ales	0	0	0	0	0	0	0	0	0	0	0	0	0	0	3	
25	MILLER, Greg	0	0	0	0	0	0	0	0	0	0	0	0	0	0	1	
31	HARRIS, Anthony	* 4	8	1	3	2	2	1	2	3	0	11	1	0	0	15	
33	FURLONG, Danny	* 0	0	0	0	0	0	0	1	1	0	0	0	0	0	3	
41	SUEING, Justice	* 5	7	0	0	3	4	2	3	5	2	13	1	1	0	16	
50	SUNDBERG, Seth	2	4	0	0	0	0	0	2	2	2	4	0	2	1	17	
TEAM REBOUNDS.....								0	3	3							
TOTALS		16	32	2	5	8	10	5	12	17	7	42	7	7	2	7	100

TOTAL FG% 1st Half:	16-32	.500	2nd Half:	0-0	.000	Game:	.500	DEADBALL
3-Pt. FG% 1st Half:	2-5	.400	2nd Half:	0-0	.000	Game:	.400	REBOUNDS
F Throw % 1st Half:	8-10	.800	2nd Half:	0-0	.000	Game:	.800	2

OFFICIALS: Tom Harrington, Paul Sternberger, Milton Stowe

TECHNICAL FOULS:

Brigham Young - none

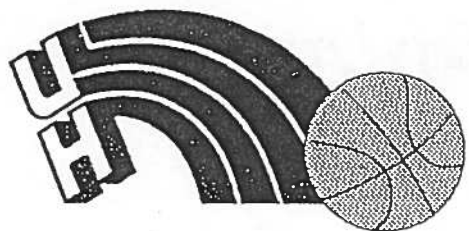
HAWAI'I - none

ATTENDANCE:

SCORE BY PERIODS:	1st	2nd	OT1	OT2	OT3	OT4	TOTAL
Brigham Young	40	0					40
HAWAI'I	42	0					42

Starters:  
Reid, Campbell, Roberts, Weidauer, Ruffner

Starters:  
Sueing, Harris, A. Smith, Kroeger, Sundberg



# Play-by-play

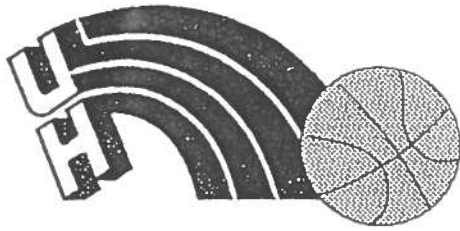
Second Half

BYU (40)

(42) Hawaii

Hawaii puts ball into play.  
 19:16 Reid pf 2, t 1  
 18:57 Weidauer layup on break, A: Reid 42  
 17:48  
 17:46 Roberts layup on inbounds, A: Weidauer 44  
 17:30  
 17:14 Roberts 17 right 46  
 16:15  
 15:53  
 Official  
 15:40  
 15:18 Roberts 14 right 48  
 Roberts ft (1) 49  
 15:10 Ruffner pf 2, t 2  
 14:53 Ruffner reverse baselin layup 51  
 14:38  
 14:25  
 14:10 Weidauer layup after rebound 53  
 14:00 Roberts pf 2, t 3  
 Cooper for Campbell  
 13:40 Weidauer pf 2, t 4  
 13:29 Cooper pf 2, t 5  
 13:11  
 12:51  
 12:38 Campbell for Cooper  
 12:25 Campbell pf 3, t 6  
 12:10  
 11:52 Weidauer layup after rebound 55  
 11:36  
 Official  
 11:19 Reid pf 3, t 7  
 11:02 Roberts layup after scramble 57  
 10:38  
 10:08 Weidauer pf 3, t 8  
 9:57 Roberts layup, A: Ruffner 59  
 9:43  
 9:30 Cooper for Weidauer  
 BYU puts held ball into play.  
 8:42  
 8:35 Cooper baseline layup 61

Sundberg pf 3, t 1  
 Furlong for Sundberg  
 44 Sueing muscle 6 left base  
 46 A. Smith layup, A: Sueing  
 Harris pf 1, t 2  
 Time Out  
 48 Harris driving loc layup after steal  
 Sueing pf 3, t 3  
 51 Kroeger 20 left, A: Furlong\*  
 Kroeger pf 2, t 4  
 52 Harris ft (2)  
 53  
 -- Harris ft (2)  
 54  
 56 Harris layup on break, A: Kroeger  
 Furlong pf 1, t 5  
 -- Sueing ft (2)  
 --  
 Kroeger pf 3, t 6  
 A. Smith pf 3, t 7 (offensive)  
 Time Out  
 57 Harris ft (1-1)  
 --  
 59 A. Smith 18 right, A: Sueing  
 60 A. Smith ft (1-1)  
 61  
 63 Harris layup, A: A. Smith  
 65 Harris driving layyup



# Play-by-play

Second Half Continued

BYU (61)

(65) Hawaii

8:20 Roberts pf 2, t 9		66 Sueing ft (1-1)
8:02 Cooper ft (2)	--	67 Harris pf 2, t 8
	62	
7:46 Ruffner 16 right	64	69 A. Smith layup, A: Sueing
7:31		Time Out
7:07 Roberts pf 3, t 7 (offensive)		Kroeger pf 4, t 9 (offensive)
Official		
6:40		
6:26 Ruffner 18 left, A: Roberts	66	
5:56 Campbell layup, A: Coper	68	
5:20 Roberts backdoor layup, A: Ruffner	70	
4:55 Ruffner ft (2)	71	Kroeger pf 5, t 10 (fouls out)
	--	Miller for Kroeger
4:31 Campbell pf 4, t 11		-- Miller (2)
	70	
4:16 Ruffner pf 3, t 12		-- Miller ft (2)
4:00 Cooper layup after rebound	73	-- Harris ft (2)
3:41 Cooper pf 3, t 13		71
Official		Time Out
3:12		73 Sueing driving loc stuff after steal
2:57 BYU		Time Out #1
2:46 Ruffner 7 right base, A: Roberts	75	
2:27		75 Miller layup, A: A. Smith
2:12 Roberts 9 right	77	
0:52 Hawaii		20" time Out #2
0:33 Ruffner pf 4, t 14		76 Harris ft (2)
BYU		Time Out #2
		77
0:03 Ruffner ft (2)		Miller pf 1, t 11
Hawaii		Time Out #2
	78	
Hawaii		Time Out #3
BYU		Time Out #3

Game ends.

Score: BYU 78, Hawaii 77.



University of Hawai'i Basketball  
Rainbows vs. Brigham Young  
January 15, 1996  
Special Events Arena, Honolulu, Hawai'i  
Post-game Quotes

Brigham Young University Head Coach Roger Reid: Anyone who comes to watch a BYU-Hawai'i game gets their money's worth, that's for darn sure. They've pulled a couple out in the same situation before with (Tes) Whitlock and (Trevor) Ruffin the year before. Even after (Anthony) Harris missed the shot (at the end of the game), I was still waiting for it to go in. That's what the games have been like."

"I thought Hawai'i played hard. Justice Sueing is a vital part of their basketball team. They're a good basketball team. I saw them during the Rainbow Classic and I like what I saw. So for our team, on the second game of the road trip, over here, we feel very fortunate. I thought there were times tonight that we executed plays better than we have all year, but we still had a couple of break downs."

"When you win a ball game like this, in a last second situation, you have to be lucky. You have to be fortunate."

"Kroeger was playing great defense. He was playing as hard as he could. He made Bryan (Ruffner) earn every shot. I'm also really impressed with (Justice) Sueing and how hard he played and (Anthony) Harris... the thing that makes Harris so good is that he can get streaky on you and make five threes in a row. Then he can really break you down on defense. He can penetrate, he's quick, he can score and dish. He's a lot like Trevor Ruffin was a few years ago."

Anthony Harris UH Guard: We just wanted to come out and play well. We played Utah without Justice, and Justice is a big part of our team. He's our leading rebounder and can score. Now we have Tes (Whitlock) back. We're looking good. Tes is going to add a different dimension to the team. Everybody knows he can shoot the ball. I can't wait to play with him personally."

Tes Whitlock UH guard on his return: "I think the wait has been long enough. You can't really judge this team because every piece of the puzzle hasn't been there. Now we finally got every piece back. I think it might have been a blessing in disguise. I don't want to come back too fast or try to overshadow anything or anybody. I just want to be a part of this and see where it goes from there."

UH Head Coach Riley Wallace: "I think that's the Rainbow team that everyone wanted to see, not the one that showed up on Saturday night. I think now everybody knows how valuable Justice Sueing is to this ball club. He is the 'warrior'. He's the leader and picks everyone else up with his play. He got everybody to answer the call that we asked for in the locker room before the game. Every night, they have to go out there and play hard, but this is BYU, so they had to play exceptionally hard. For the most part, they all came out and did it."

"Both teams played hard and pretty even. It was a good clean ball game. I like to see that, when guys really go at each other and still keep their heads in the game and just play basketball."